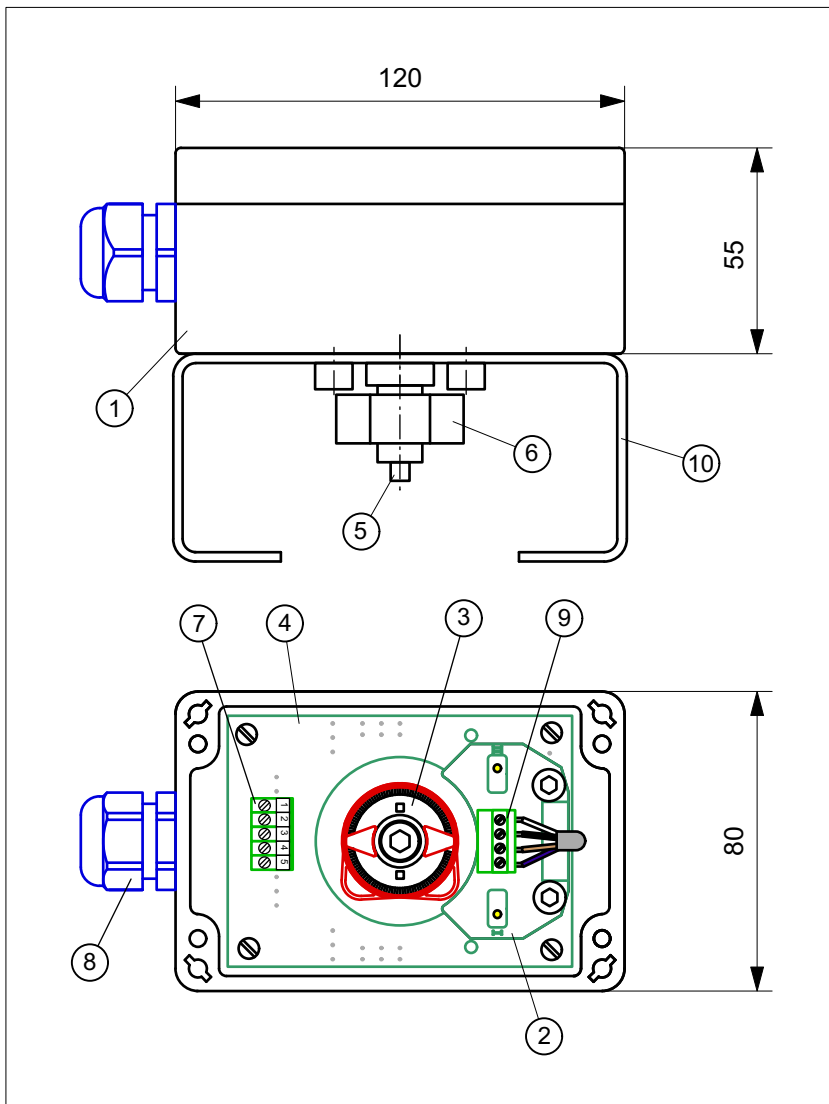




ET-Module PFF25NVFAZ0

ET-Module with one inductive double sensor Pepperl+Fuchs NCN3-F25F-N4-P on circuit board in Vestamid-Housing 120 x 80 x 55 mm, with vision panel



TECHNICAL DATA

Manufacturer: Pepperl+Fuchs
 Type: NCN3-F25F-N4-P
 inductive, Dual
 Normally closed contact

Operating distance: 3 mm
 Nominal voltage: 8,2 V DC
 Output: short-circuit protection,
 inverse-polarity protect.

Current consumpt.: ≥ 3 mA, inactive
 ≤ 1 mA, active

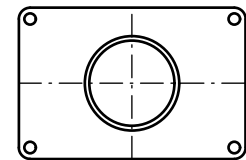
Switch. frequency: 0 ... 1500 Hz
 Temperature: -25 ... 85° C
 Signal: LED, yellow
 Sealing: EPDM
 Ingress protection: IP67 (IP68)
 Switch. precision: $< 1,5^\circ$
 Connection: Mini-Combicon
 System connection: Cable gland M20x1,5
 Clamp. range 8...13 mm

Clamps: Screw clamps,
 up to 1,5 mm², pluggable



II 2G Ex ia IIC T6 Gb

EC-Type Examination Certificate No.
TÜV 99 ATEX 1479 X



housing cover with vision panel $\varnothing 45$

OBJECT LIST

Pos.	Pcs.	Description	Material
1	1	Housing	Vestamid
2	1	P+F NCN3-F25F-N4-P	-
3	1	Switch cam system	POM
4	1	Circuit Board	-
5	1	Axis	A2
6	1	Position indicator	PE
7	1	Screw clamp, 5-pole	-
8	1	Cable gland M20x1,5	PA
9	1	Phoenix-connector	-
10	1	Bracket size 1 - 4	A2

WIRING DIAGRAM

