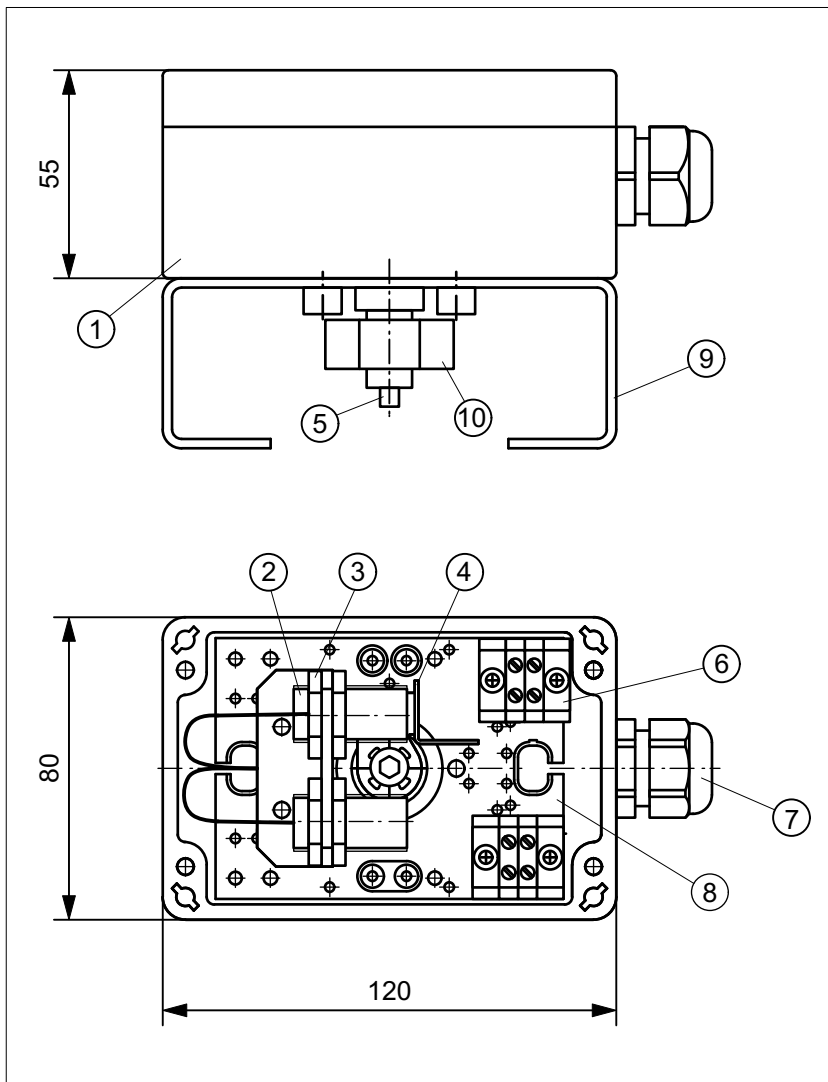




ET-Module PF211SVFAZ

ET-Module with proximity sensors Pepperl+Fuchs NJ2-11-SN-G
in Vestamid-Housing 120 x 80 x 55 mm, with vision panel



TECHNICAL DATA

Manufacturer: Pepperl+Fuchs
 Type: NJ2-11-SN-G
 inductive, NAMUR
 normally closed contact
 with safety function

Operating distance: 2 mm
 Nominal voltage: 8 V DC
 Current consumption: ≥ 3 mA, inactive
 ≤ 1 mA, active

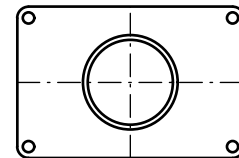
Switch. frequency: 0 ... 3000 Hz
 Signal: LED, yellow
 Temperature: -25 ... +85°C
 Housing: Vestamid, black
 with vision panel

Sealing: EPDM
 Ingress protection: IP68 (Sensor)
 IP65 (Housing)

Switching precision: $< 1.5^\circ$
 System connection: Cable gland M20x1,5

Ex II 2G Ex ia IIC T6 Gb

EC-Type Examination Certificate No.
PTB 00 ATEX 2049 X



Housing cover with vision panel $\varnothing 45$

OBJECT LIST

Pos.	Pcs.	Description	Material
1	1	Housing	Vestamid
2	2	P+F NJ2-11-SN-G	-
3	1	Mounting angle	Aluminium
4	1	Switch flag	A2
5	1	Axis NJ	A2
6	2	Terminal block, 2-pole	-
7	1	Cable gland M20x1,5	-
8	1	Mounting plate	PA 6
9	1	Bracket size 1 - 4	A2
10	1	Position indicator	PE

WIRING DIAGRAM

